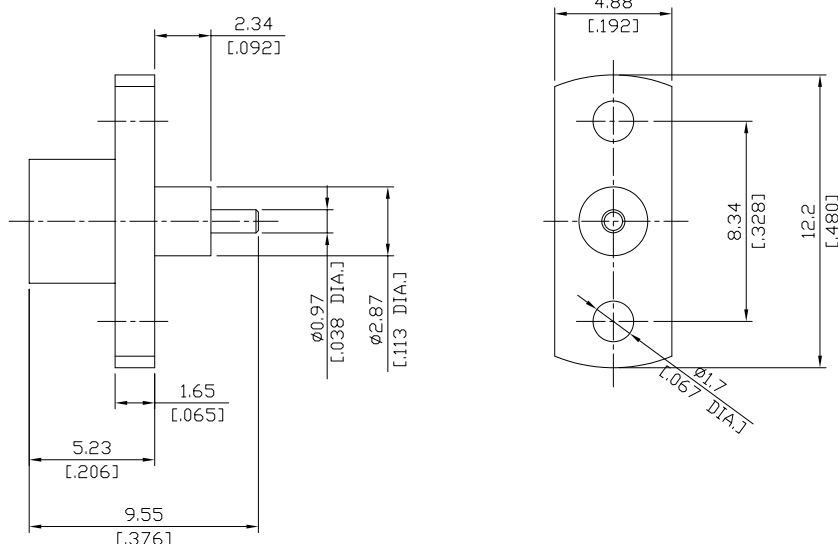


MCX (Female) Straight 2-Hole Panel Flange Connector Jack
Coaxial End, DC-6 GHz

MCX2GTA50-0955A/91



All dimensions are in mm [inch]

Tolerances according to DIN ISO 2768-mH

Interface

According to IEC 61169-36

Electrical Data

Impedance	50 Ω
Frequency	DC to 6 GHz
Insulation Resistance	≥ 10 GΩ
Voltage rating (sea level)	335 V rms max.
Dielectric withstanding voltage (sea level)	≥ 1000 V rms
Contact resistance: Centre contact	≤ 5 Milliohms
Contact resistance: Outer contact	≤ 1 Milliohms
Corona Level: (at 70,000 feet)	≥ 250 V

Material And Plating

Piece Parts	Material	Plating
Centre contact	Beryllium Copper	Gold plating, 3 μinch (Non-magnetic nickel-phosphorus underplating, 80 μinch)
Body	Brass	Gold plating, 3 μinch (Non-magnetic nickel-phosphorus underplating, 80 μinch)
Insulator	PTFE	

Mechanical Data

Coupling mechanisms	Snap-lock
Engagement force: Axial	≥ 5.6 pounds
Disengagement force: Axial	1 to 8 pounds
Contact retention	1 inch-ounce min. torque

MCX (Female) Straight 2-Hole Panel Flange Connector Jack
Coaxial End, DC-6 GHz

MCX2GTA50-0955A/91

Environmental Data

Temperature Range	-65°C to +165°C
Thermal shock	MIL-STD-202, Method 107, Condition F
Corrosion	MIL-STD-202, Method 101, Condition B
Vibration	MIL-STD-202, Method 204, Condition B
Shock	MIL-STD-202, Method 213, Condition B
Moisture Resistance	MIL-STD-202, Method 106
RoHS	compliant

Packing

Single or 100